

# Queen Mary University of London Postgraduate Research Virtual Event

## Faculty of Science and Engineering

Tuesday 15th November 2022

# Meet the team



**Flora Mckay**  
PGR Recruitment  
Manager, Global Engagement  
Office



**Zi Parker**  
Doctoral College Manager,  
Doctoral College



**Dr Akram Alomainy**  
Deputy Dean for Postgraduate  
Research in the Faculty of Science  
and Engineering



Queen Mary  
University of London

- Introductory presentation on Queen Mary, PGR application processes and funding.
  - Subject-specific sessions will follow.
  - Please ask questions in the chat or in your school breakout session.
  - For any enquiries after the webinar please contact [pgr-enquiries@qmul.ac.uk](mailto:pgr-enquiries@qmul.ac.uk)
-

# Why choose Queen Mary?



# Excellent reputation

**124<sup>th</sup> in the  
world**

---

Times Higher Education  
World University  
Rankings 2023

**Russell Group  
University**

---

**9 Nobel Prize  
Winners**

---

**19<sup>th</sup> in the  
world for  
international  
outlook**

---

Times Higher Education  
World University  
Rankings 2023

# Research Excellence Framework (REF) 2021

Across the University, 92% of Queen Mary's research was assessed as internationally excellent or world leading.

We have been rated number 1 in the UK for Drama.

The following other subject areas are also in the top 10:

- Computer Science and Informatics
- Economics and Econometrics
- Engineering
- Film
- History
- Politics and International Studies

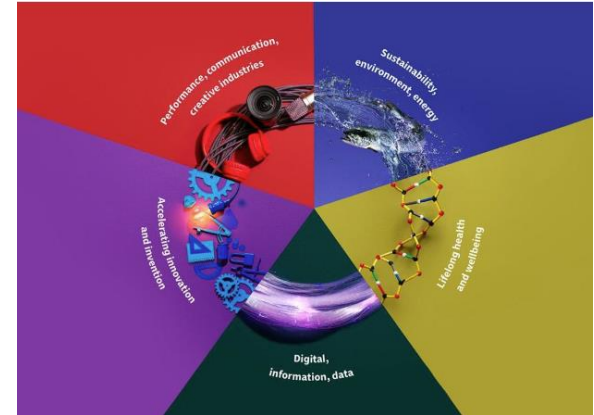
**7<sup>th</sup> in UK  
for  
research  
quality**



# Research Highways

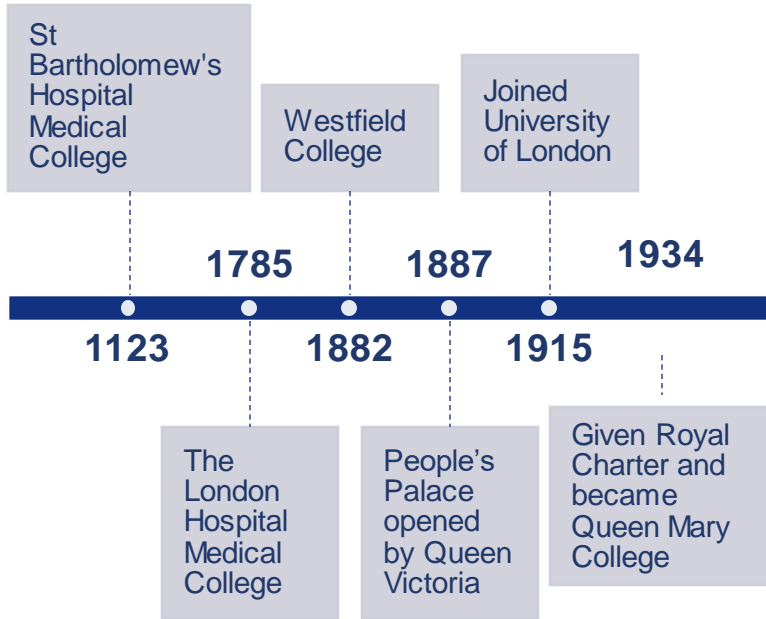
Five pioneering research themes, combining expertise across disciplines:

- Performance, communication, creative industries
- Sustainability, environment, energy
- Digital, information, data
- Accelerating innovation and invention
- Lifelong health and wellbeing



Find out more: <https://www.qmul.ac.uk/research/research-highways/>

# Long History





# Graduate Prospects

- Overall, 93% of all our graduates are in employment or further study
- 95% of postgraduate and PhD graduates are in employment or further study within six months of graduating
- Dedicated careers office
- Excellent links to industry
- Graduate visa

\*statistics according to the Graduates Outcomes Survey 2020



# Global Profile – our students

1,800  
PGR  
students

32,000  
students

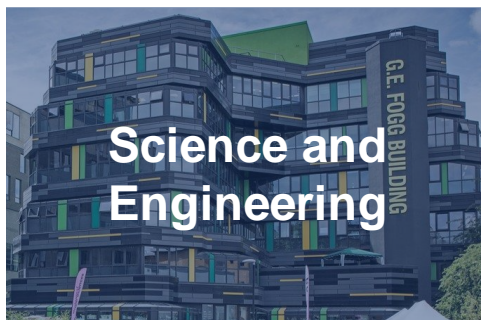
58%  
Home

42%  
Overseas

94  
Nationalities

(across all PGR  
programmes)

# Our Faculties



# Science and Engineering

- Engineering and Materials Science
- Electronic Engineering and Computer Science
- Mathematical Sciences
- Physical and Chemical Sciences
- Biological and Behavioural Sciences



# State of the art facilities and student services

- Campus university in heart of London
- Graduate Centre
- Student Village (shops, restaurants, bank, laundry)
- Supercomputers
- Informatics Teaching Laboratory
- Advice and Counselling Service- counselling, trained immigration advisors, financial advice, medical support





Whitechapel Royal London Hospital  
Barts and The London  
School of Medicine and Dentistry

London's campus university



Mile End Campus





# Four London locations

# East London Location





# Accommodation for postgraduate students

- Over 3,000 bedrooms available across our three campuses and partners.
- Fees range from £162 - £229 per week, including en-suite options
- Costs include all bills and cleaning of communal areas, as well as WiFi
- Meal plan options also available



# Life as a Postgraduate Research Student at Queen Mary



Join a community of over 1,800 postgraduate research students

Full-time PhDs are 3-4 years long, (part-time PhDs 6-7 years)

Supervision tailored to you

Ranked the best city in the world to study in-  
QS Best Student Cities



# The Doctoral College



There to support you throughout each stage of your PhD- from admissions to graduation.



Professional development training throughout



Dedicated careers service



Organise PhD Induction Week and other events throughout the year



<https://www.qmul.ac.uk/doctorscollege/about-us/blog/>



# Questions

- ✓ General PGR enquiries: [pgr-enquiries@qmul.ac.uk](mailto:pgr-enquiries@qmul.ac.uk)
- ✓ Accommodation: <https://www.qmul.ac.uk/residences/>
- ✓ The Doctoral College: [doctoralcollege@qmul.ac.uk](mailto:doctoralcollege@qmul.ac.uk)
- ✓ Immigration: <https://www.welfare.qmul.ac.uk/international/> or [www.welfare.qmul.ac.uk/contact](http://www.welfare.qmul.ac.uk/contact)





Queen Mary  
University of London